

Las Vegas Strip

Las Vegas Boulevard is one of America's only nighttime byways and possibly the most concentrated collection of neon and lights in the world. A trip down the Strip is an all-inclusive way to experience the heart of Las Vegas -- an adventure that captures 75 years of history, glitz, and roadside charm.



Length: 4.5 miles / 7.2 km

Time 30 minutes to drive or
to several hours to enjoy the

Allow: byway.

Local Information

**Las Vegas Convention and
Visitors Authority**

702-892-0711

1-877-VISIT LV (847-4858)

Visitor Services



Fees

There are no fees to drive the byway. There might be parking fees, depending on where you park.



Bicycle/Pedestrian Facilities

Sidewalks line the strip and provide plenty of room for walking. Cyclists are welcome, but they must observe traffic laws like automobiles.



Food

All the hotels and casinos along the byway have restaurants in them. Several types of eating establishments also dot the Las Vegas Strip.



Gasoline

A gas station stands at one end of the byway on Sahara Ave. and there are several on I-15 before the byway so it is suggested that you fill up before entering the Strip.



Information

The Las Vegas Information Center is located at 3150 Paradise Rd.



Lodging

Several hotels of varying prices dot the byway so finding a place to stay should not be hard. It is suggested that you make reservations in advance.



Phone

All of the hotels and casinos along the byway have pay phones available.



Restrooms

All of the hotels, casinos, restaurants, and spas along the byway have public restroom facilities.



Retail

Many of the hotels and casinos have places to shop within their complexes but the best places to shop are on Fremont Street and within the 18-block Arts District.

Special Considerations

This is a pedestrian-rich environment, so be on the alert when driving. Consider driving the byway once each direction. This way, you will be able to view all the sites that line both sides of the street and catch some that you may have missed.

Especially after dark, pedestrians may encounter litter, advertisements, and printed materials that some might consider offensive.

Seasons

Best Time to Drive

Night or day matters more than which season. Las Vegas is warm year-round.

High Season

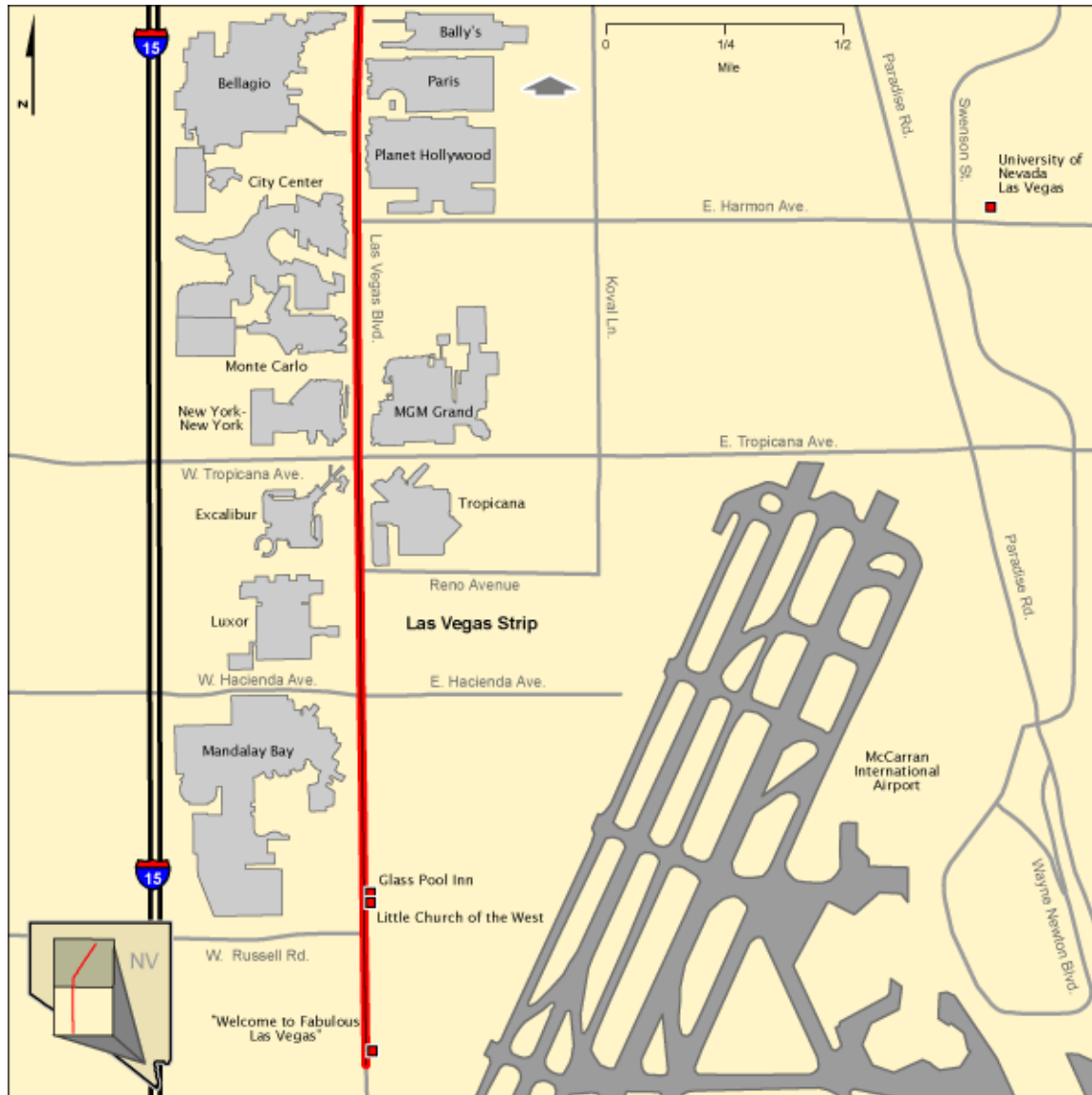
The Strip is usually always fairly crowded and congested. Night time is usually busier than day, and holidays are especially busy.

Map and Directions

Standard Map - Northern Section



Standard Map - Southern Section



Legend:

Point of Interest	Campground	Featured Byway	Water	State Border
Park	Picnic/Rest Area	America's Byways	Wildlife Refuge	Urban Area
Mountain	Interstate	Other Byway	Wilderness Area	Tribal Nation
City	U.S. Highway	Other Road	Other Federal Lands	Military Base
Capital	State Highway	Trail	Other State Lands	

Driving Directions

The byway begins at the intersection of Russell Rd. and Las Vegas Blvd. Follow the Las Vegas Blvd. for 4.5 miles until it intersects Sahara Avenue, where the byway ends.

Getting to the Byway

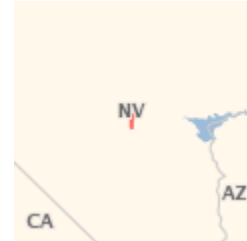


Nearby airports

Las Vegas McCarran International Airport, NV (2.8 miles / 4.51 km, 8 minutes)

Start: ✈ 5757 Wayne Newton Blvd. Las Vegas, NV 89119

Directions: Exit airport onto N Airport Con. Road becomes Swenson Street. Turn left onto E Tropicana Avenue, which intersects Las Vegas Blvd.

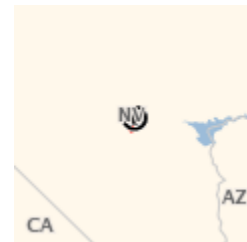


Nearby cities

Las Vegas, NV (On the byway)

Start: 📍 Las Vegas Blvd
N 36.144° W 115.157° [?]

Directions: In Las Vegas, the byway runs north-south along Las Vegas Blvd.



Road Trip: Famous Places in a Row

Departure: Luxor, Nevada

Destination: Riviera, Nevada

Time to allow: 1 day

Experience some of the world's most famous places in one day.

Day 1

- **Start: Luxor**

See huge replicas of the Great Sphinx and a thirty-story pyramid. " Tour King Tut's tomb and a museum dedicated to him. Watch videos and participate in the interactive attraction called *In Search of the Obelisk*.

- **Stop 1: New York-New York**



From previous stop: 3 minutes / 1.03 mi (1.6 km)

Directions: Go south out of the Luxor Resort and Casino and turn left onto Mandalay Bay Rd. Turn left when you come to S. Las Vegas Blvd to go north. Turn left onto NV 593 and then right onto New York Blvd. Follow this road up to the New York-New York Hotel and Casino.

Suggested time at this stop: 1 hour 30 minutes

Visit the Empire State Building, Brooklyn Bridge, and the Statue of liberty all without dealing with New York traffic. Catch a thrill as you ride the roller coaster around New York City.

- **Stop 2: Monte Carlo**



From previous stop: 4 minutes / 0.98 mi (1.6 km)

Directions: Take New York Blvd. south to NV 593. Turn left onto NV 593 and follow it to S. Las Vegas Blvd. Turn left onto this road to follow it north. Take the ramp toward Rue De Monte Carlo. Follow this road to the Monte Carlo Resort and Casino.

Suggested time at this stop: 1 hour

Stroll the Street of Dreams to get a taste of France. Visit the first brewpub in Vegas. Stay to watch a show at the elaborate theater.

- **Stop 3: Paris**



From previous stop: 3 minutes / 1.31 mi (2.1 km)

Directions: Take Rue De Monte Carlo east to S. Las Vegas Blvd. Turn right to go south this road and follow it to NV 593. Make a U-turn on NV 593 to go back north on S. Las Vegas Blvd. Follow this road to Paris Dr. and turn right onto it. Follow this road to the Paris Resort and Casino.

Suggested time at this stop: 45 minutes

Stroll the streets of Paris and enjoy a French baguette. Stop by the half scale replica of the Eiffel tower.

- **Stop 4: Venetian**



From previous stop: 2 minutes / 0.92 mi (1.5 km)

Directions: Go west on Paris Dr. to S. Las Vegas Blvd and turn right to go north on this road. Follow S. Las Vegas Blvd until you see the Venetian Resort Hotel and Casino on your right.

Suggested time at this stop: 1 hour

Float down a canal in an Italian gondola. Meet the wax representations of celebrities at Madame Tussaud's Wax Museum. Enjoy several famous sites Venetian sites and the magnificent architecture.

- **End: Riviera**



From previous stop: 5 minutes / 1.46 mi (2.3 km)

Directions: Go north on Las Vegas Blvd for 1.5 miles, until you see the Riviera Hotel and Casino on your right.

Enjoy several entertainments including live shows, comedy acts, and concerts. The hotel offers fine dining and a pool for a relaxing end to the day.

Totals for Day 1

Total Distance Traveled: 5.7 miles / 9.1 km

Total Travel Time: 17 minutes

Total Stopping Time: 4 hours 15 minutes